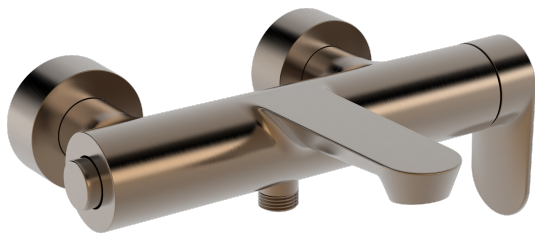
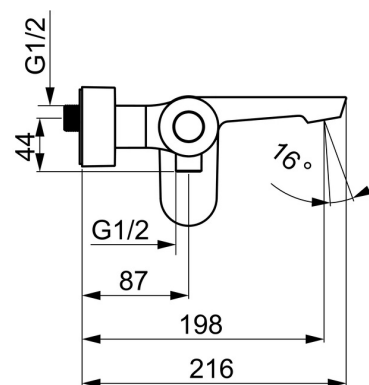
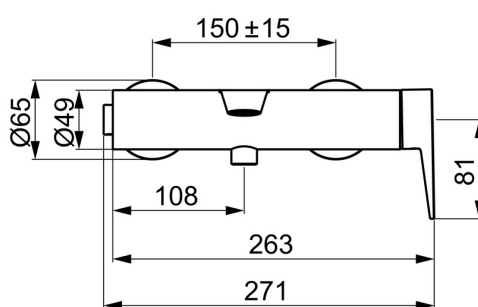
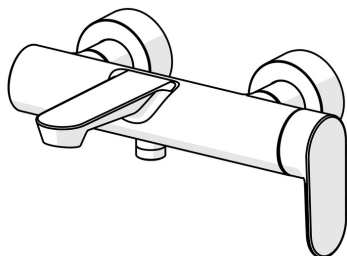


EAN: 4057304024030  
[static.hansa.com/3744220781](https://static.hansa.com/3744220781)



- Bathtub & Shower
- Single-lever
- Wall mounted
- Brushed bronze
- Fixed spout
- Hidden aerator, PCA® - constant flow rate regardless of pressure variations, Adjustable flow angle
- Single operating lever/handle, Hot/Cold symbols
- Push operated diverter, Automatic reset
- Limitation option for maximum temperature and flow-rate, Adjustable hot water stop (included, retrofittable)
- ø 40 mm ceramic cartridge for flow and temperature control
- Eccentric coupling(s), Cover plate(s)



## Technical data

### Flow properties

Flow-rate at 3 bar **24.6 / 17.4 l/min**

### Technical properties

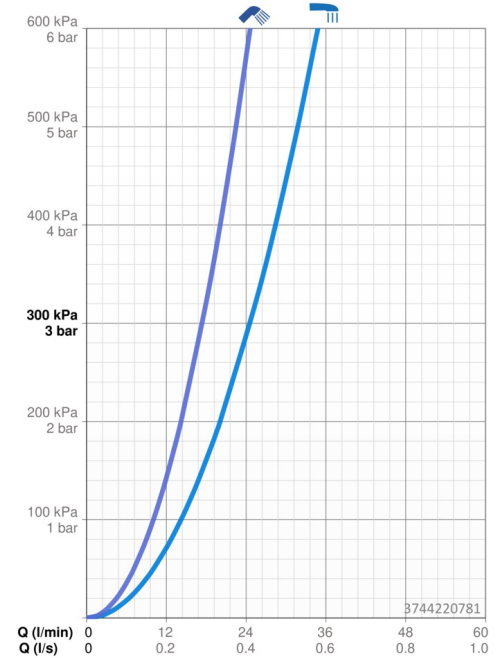
Hot water supply **max. +90°C**  
 Working pressure **0.5-10 bar**  
 Connection size **G1/2**  
 Installation width **CC150± 15 mm**  
 Backflow prevention (EN1717) **EB**  
 Material **Brass**

### Regulations

EN standard **EN 817**

### Approvals and Declarations

Declaration of conformity **DoC**



## Spare parts

### SP37442207CLR

Name

Code

